



The Abruzzo Earthquake

April 6, 2009 – magnitude 6.3

Adam Farson, VA7OJ

Based on material supplied by

Lidio Gentili, IØGEJ

A national effort



Abruzzo Emergency!



L'Aquila Facts



- L'Aquila: Mediaeval city, founded in the 13th Century. Capital of the mountainous Abruzzo region.
- Population 70,000, with many thousands more tourists and foreign students.
- Walled city with narrow streets, lined by Baroque and Renaissance buildings.
- Distances:
 - ◆ 75 km W of Pescara
 - ◆ 85 km NE of ROME
 - ◆ 115 km SE of Perugia
 - ◆ 145 km S of Ancona
- Time of Earthquake :
 - ◆ Monday, 6 April 2009 at 03:32:39 CEST (01:32:39 UTC) at epicentre in Central Italy (Abruzzo)
- Magnitude of Earthquake: 5.8 Richter scale (*also reported as 6.3*)

Participation by ARI-RE, Perugia Section



ARI: Italian Association
of Radio Amateurs
RE: Emergency Radio
Communications
Protezione Civile Nazionale:
National Civil Defence



Attestation from National Civil Defence, Calabria Region



- Each member of the Perugia ARI-RE team personally received the above certificate from Civil Defence, attesting to his participation in the rescue and assistance operations related to the Abruzzo earthquake of 6 April 2009.

First ARI group arrives at scene



ARI-RE PG (Perugia) – the first operational group arrives in Abruzzo. This is the beginning of the photographic report updated on 18.04.09 at 17:30.

Note the severe damage to buildings!

The ARI-RE groups check in



Accreditation of the ARI-RE crews at the Civil Defence command centre

Another view of the command centre



A typical workstation



Planners at work

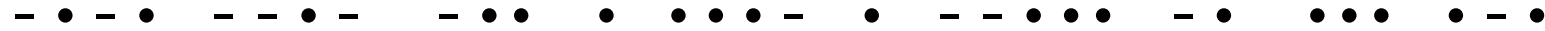


Whilst waiting, IK0QJO serves real Italian coffee...mmm!



In Attesa, IK0QJO serve il suo Caffè

L'Aquila City Hall before and after the earthquake (5.8 Richter scale!)



Prefettura del L'Aquila prima del terremoto e subito dopo il sisma 5.8 Richter

*An entire street destroyed
(in L'Aquila)*



6/4/2009

NSARC - Abruzzo Earthquake

14

Communicators in Montereale



Luca IZØMTF at the Montereale comms camp (L'Aquila province), 940m ASL



Montereale (L'Aquila): IZØFWD at the comms position



Montereale (AQ) IZØFWD alle radiocomunicazioni

Close-up of the IZ0FWD/IZ0MTF radio station (smokin'...) Note FRS HT used for close-in comms



Stazione Radio IZ0FWD e IZ0MTF

*IK6FNO (from Lanciano, a nearby town)
and IØUZF with the Mayoress and
Police Commissioner of Montereale*



IK6FNQ di Lanciano, IØUZF con la Sig.ra Sindaco e Com. CC di Montereale

*Emergency vehicles in Montereale site
on a very cold Easter morning*



Campo di Montereale (AQ) mattino di Pasqua, molto freddo!

*Montereale comms camp with IZØMTF
and IZØFWD*



6/4/2009

NSARC - Abruzzo Earthquake

21

A group photo (SW = SWL)



The Montereale area is assigned to the Civil Defence EMS of the Calabria region



Montereale: A.R.I. Jeep donated by Civil Defence, Calabria Region



Montereale (AQ) - Jeep dell'ARI - T.L.C. da Protezione Civile Regione Calabria

Tent for ARI-RE Perugia at the Montereale EMCOMM camp



Two more ARI-RE radio ops



A tent city provided by the Swiss Red Cross



National ARI-RE Coordinator I8IEM visits the Monreale EMCOMM camp



I8IEM Coordinatore Nazionale ARI-RE Visita il Campo di Monreale

1ØKWX in the "shack"



The ruined church in Onna

The village (pop. 350) suffered 40 deaths and lost almost all its historic buildings.



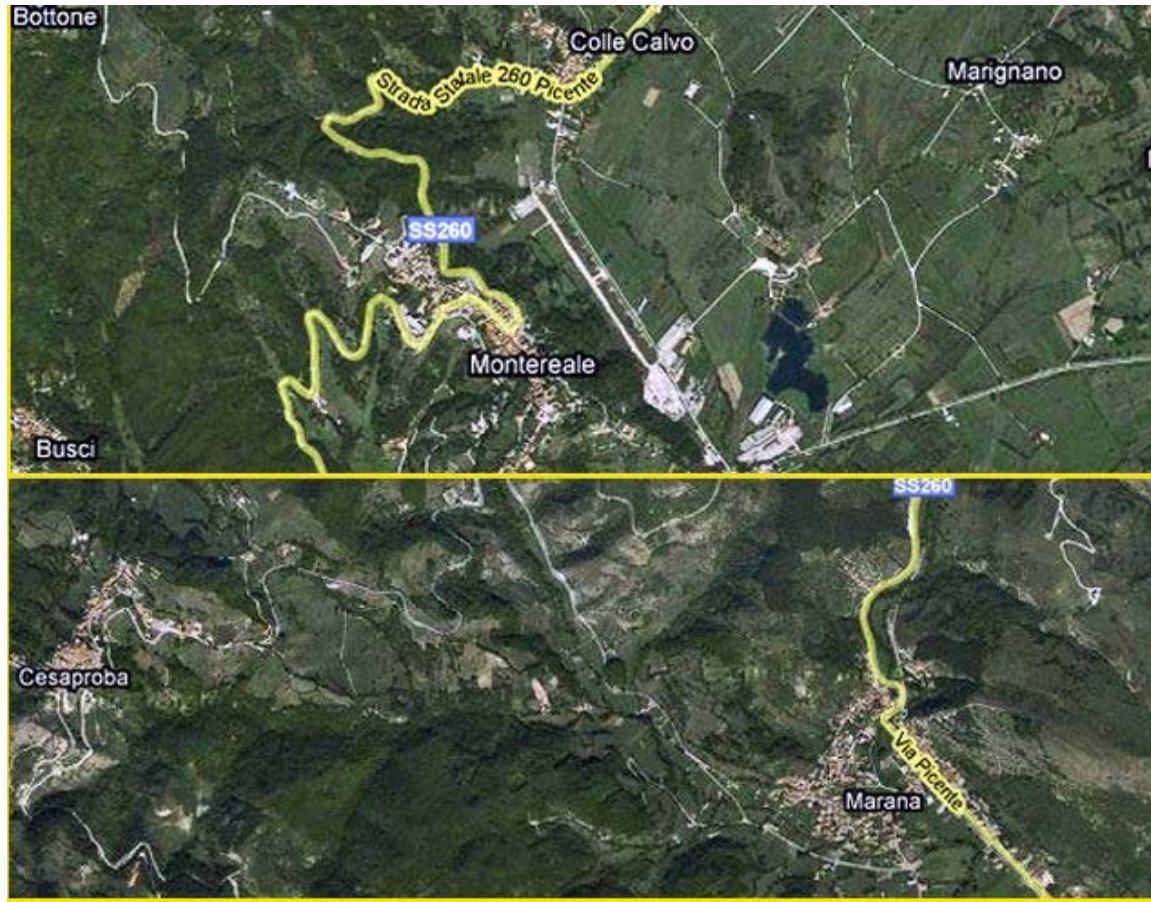
L'Aquila, right after the quake



L'Aquila 06.04.2009



Aerial views of Montereale & Marana



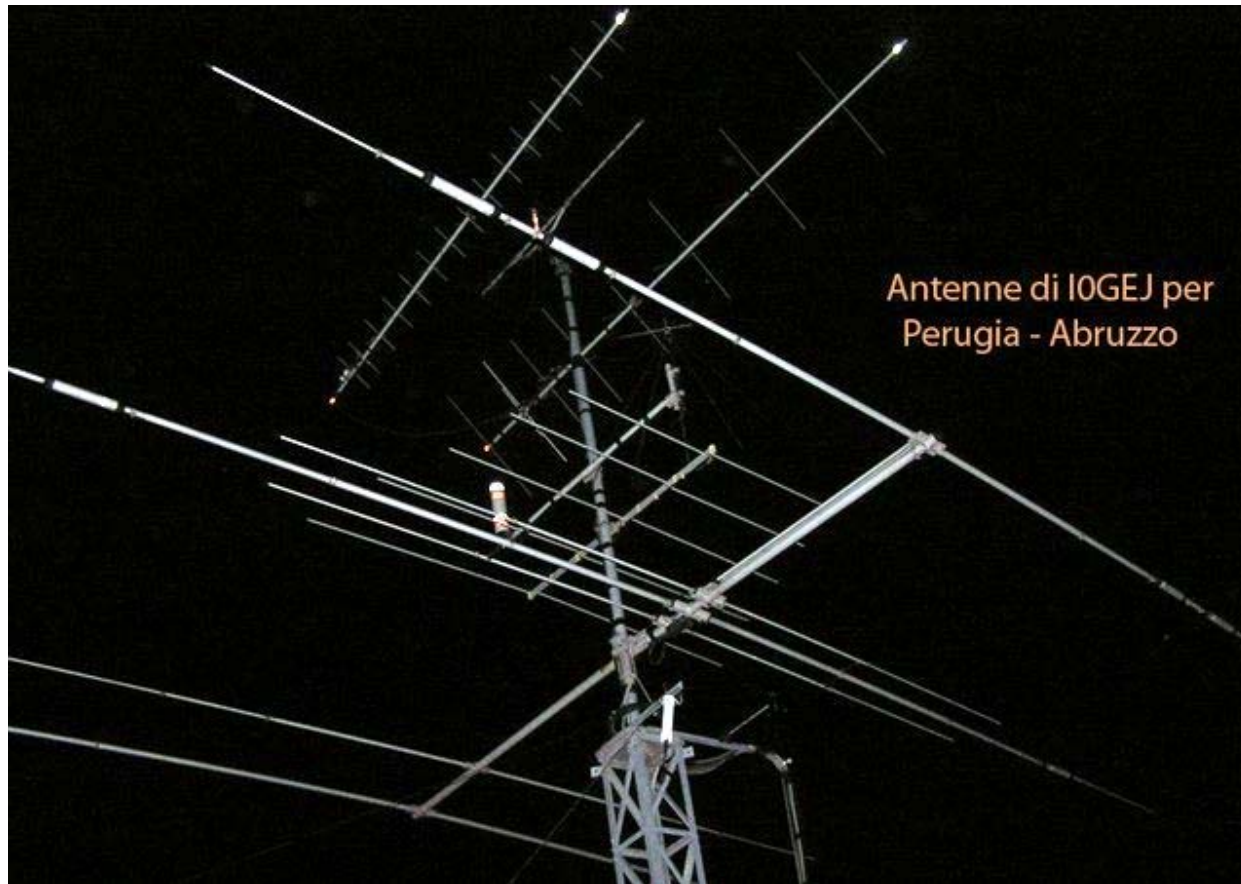
Campsite in Marana, near Montereale
Marana is a small village lying along the banks of the
River Aterno and surrounded by the mountains of the
Gran Sasso and Laga Mountains National Park



Campo di MARANA (Montereale)

Marana, piccolo paesino adagiato sul corso del Fiume Aterno ed è circondato dai monti del "Parco del Gran Sasso e Monti della Laga"

*Lidio IØGEJ's antenna system at his
Perugia QTH, pointed towards Abruzzo*



Antenne di IØGEJ per
Perugia - Abruzzo

IØUZF sets up the EMCOMM radio station in Marana



Marana, IØUF completa la stazione radio

IØUZF and other comms personnel



Another view of the Marana campsite



6/4/2009

NSARC - Abruzzo Earthquake

38

Francesco, IØUZF in the Joint EOC in the town of Pizzoli (L'Aquila Region)



*Francesco, IØUZF and Mimma,
I6YOT in Pizzoli EOC #3*



I6YOT, Mimma
del C.O.T.A
COM 3 di Pizzoli (AQ)

ARI-RE operators at the Abruzzo Ops Centre (Mimma I6YOT, IW6MKI Ubaldo)



IW6MKI and IK0QJO became known for their work during the 1976 Seveso chemical accident near Milan. Nothing is impossible! Many years later, they helped out again at the Pizzoli EOC near L'Aquila.

Santo Stefano di Sessanio is a small town (1250m ASL) in the area covered by Joint EOC #6 (lower image). Op: IZØGUS (ARI-RE, Perugia)



Piccolo Comune a 1.250m slm nel territorio del COM 6. Operatore ARI-RE PG (IZØGUS)



S. Stefano di Sessanio camp

1250m ASL



Campo nel Comune di Santo Stefano di Sessanio a 1.250m

IZØGUS 4-el. Yagi at S. Stefano di Sessanio camp comms tent



Civil Defence Volunteers' mess tent



Regional map showing areas covered by EOC's (COM) 1 through 7



Map showing disposition of comms units (Abruzzo Emergency: seismic events of 06.04.2009)



*IØGIM & IKØMMI operate in the town of
Barete, 733m ASL*



Tent camp in Barete, a small town 20km from L'Aquila at 800m ASL. Operators: IØGIM & IKØMMI (ARI-RE Perugia Section)



**Campo tende Comune di Barete
un piccolo Comune a 20km da AQ
situato a 800m s.l.m. - Operatori
ARI-RE PG: IØGIM e IKØMMI**

*IØGIM with ARI-RE Perugia Section
Manager IØKWX*



*IØKWX taking off in the ARI-RE
Cherokee Limited (an unusual vehicle
for Italy!)*



*Typical comms tent (tents supplied
by Civil Defence Agency)*



*Seems confusing? Nonetheless,
everything works fine!*



*IKØMMI's VHF/UHF radio display,
Barete campsite*



Apparato di IKØMMI - Campo di Barete

Giampiero IØGIM taking in some well-deserved camp grub



Giampiero con il meritato rancio del campo

Chow line at Barete camp



A sweet smile brings courage and hope



Tent camp at Cesaproba village, 983m ASL (L'Aquila province). ARI-RE Perugia Section supplied several operators here



Antennas

View of Cesaproba tent city, taken through the mesh fence



Una foto dalla rete della porta del campo ora tendopoli a Cesaproba

Inside the tent city



IKØUTM and his complete setup



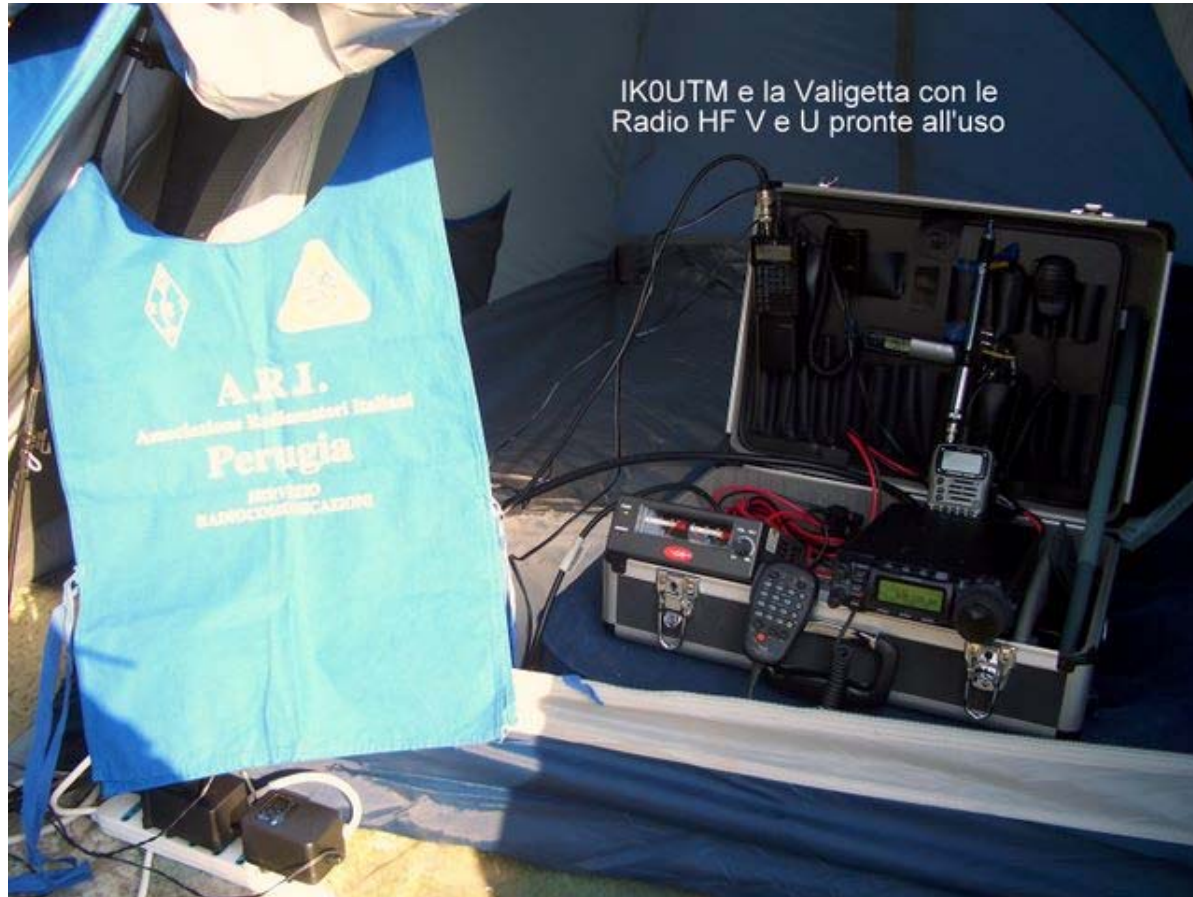
Vanni, IKØUTM relaxing between assignments



*Radio station inside IKØUTM's tent –
Cesaproba camp*



IKØUTM's VHF/UHF "go-kit" deployed



Cesaproba Camp: Mobile ops centre and ambulance of the "Yellow-Blue Cross" (a public-service arm of the Italian Civil Defence Agency)



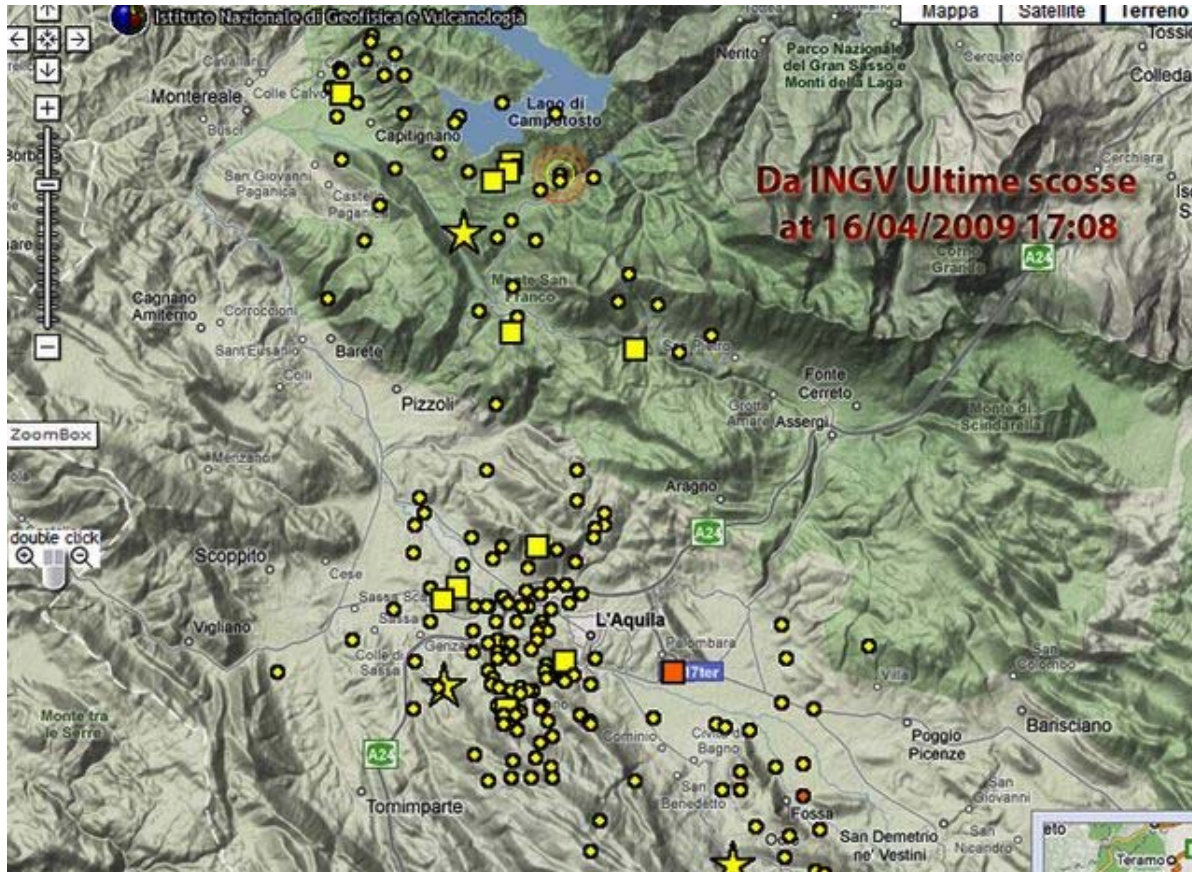
Campo di Cesaproba - La P.A. CroceGialloAzzurra di Torino

This is mountainous country!

(Photo: IKØUTM)



Map showing aftershock locations:
16.04.2009, 17:08



Radio station (EOC #6) provided by ARI-RE Perugia Section



IZØGUS radio station layout



Sistemazione degli apparati radio di IZØGUS



- The quake struck at 0330 (0130 GMT) close to the town of L'Aquila, 95km north-east of Rome. At least 298 people have been killed and 1500 injured, in a powerful earthquake that struck central Italy, Italian officials say. 40,000 people were left homeless and 10,000 buildings damaged or destroyed in the L'Aquila area.
- “Un aiuto subito”, an appeal on behalf of communities affected by the Abruzzo earthquake, was launched within hours of the disaster by the Corriere della Sera, Corriere.it, the Gazzetta dello Sport, Gazzetta.it, 105 Network, Virgin Radio and City.
- Link to: Donations
- BBC News report
- Many thanks to my good friend Lidio Gentili IØGEJ, of Perugia, for kindly permitting me to use his material and photos in the creation of this presentation.
- Lidio's website: <http://www.radiocronache.com/>